

Protocol Execution and Transformation Tool



Doctors

Clinical Trials

Analysts

Financial

Researchers

Insurance



sas



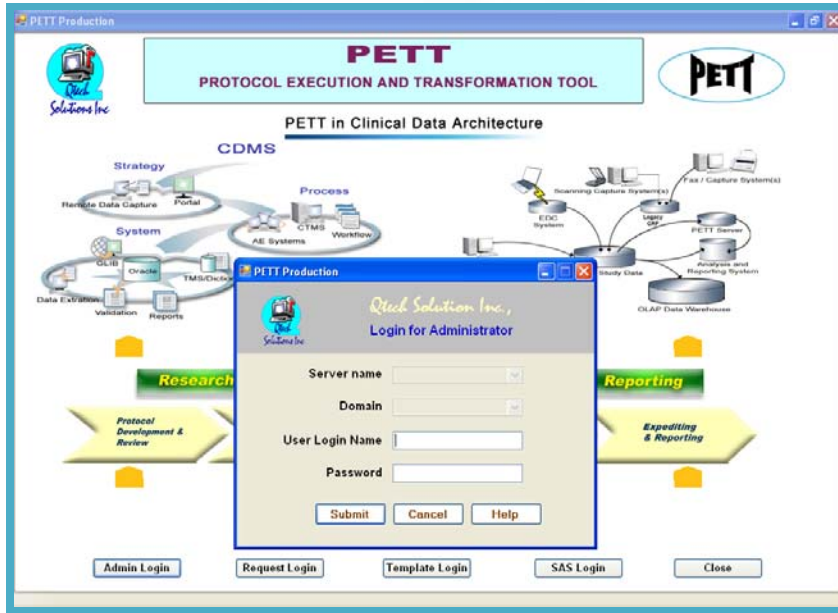
PETT

1. Features of PETT (Protocol Execution and Transformation Tool)

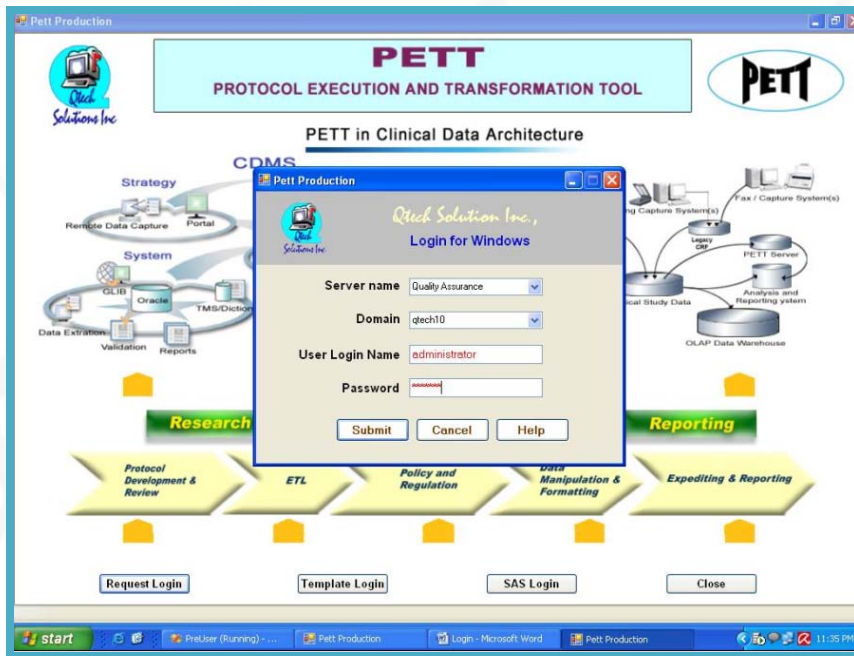
- i) **PETT (Protocol Execution and Transformation Tool)** is an advance and intelligence Internet/Web based Software Application. This tool can be used for statistical and analytical analysis by retrieving accurate data/record from database using its vast logical and analytical capacities which would be used by analysts and researchers for their work in various fields (like Clinical Trials, Financial, Insurance, SAS, etc.)
- ii) PETT maintains high level security for its client/user and database using latest features at backend.
- iii) After getting minimum technical training and support, user/client can work friendly using its GUI interface.
- iv) PETT having fast execution performance, so, time and cost would be reduced by 50% than common process.
- v) Our PETT experts will provide necessary technical and professional training/support to client/user.
- vi) PETT client/user would have to pay its subscription amount as per our agreement.
- vii) PETT maintains three layers:
 - a. Pre-execution
 - b. At execution
 - c. Post execution
- viii) PETT having three types of login level:
 - a. Window Login
 - b. Linux Login
 - c. SAS Login

2. Important Screen Shots:

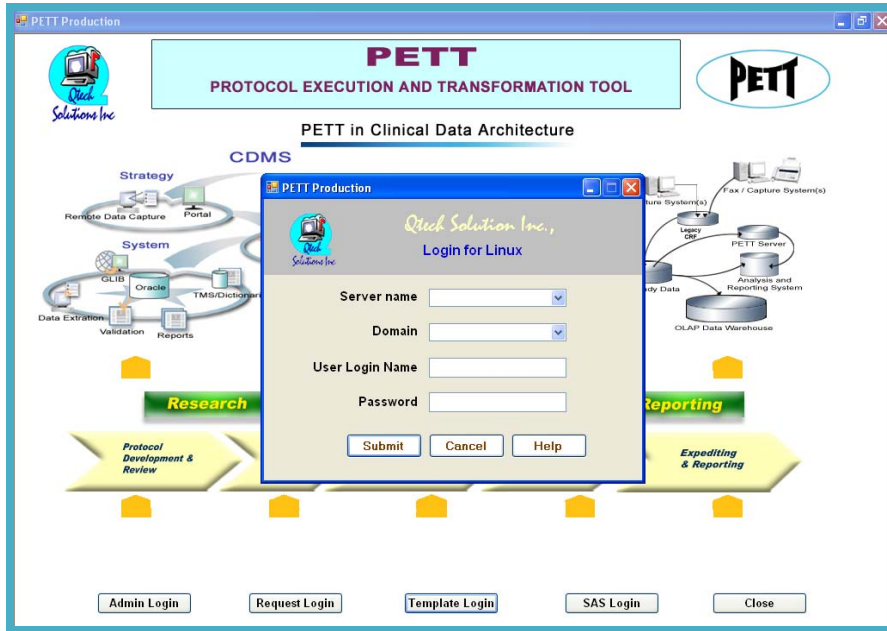
- i. **Admin Login:** PETT administrator can login using **Admin Login** button for this screen and he can observe status of templates.



- ii. **Window Login:** Using **Request Login** button, PETT Window administrator can login and feed necessary information of users/employees.



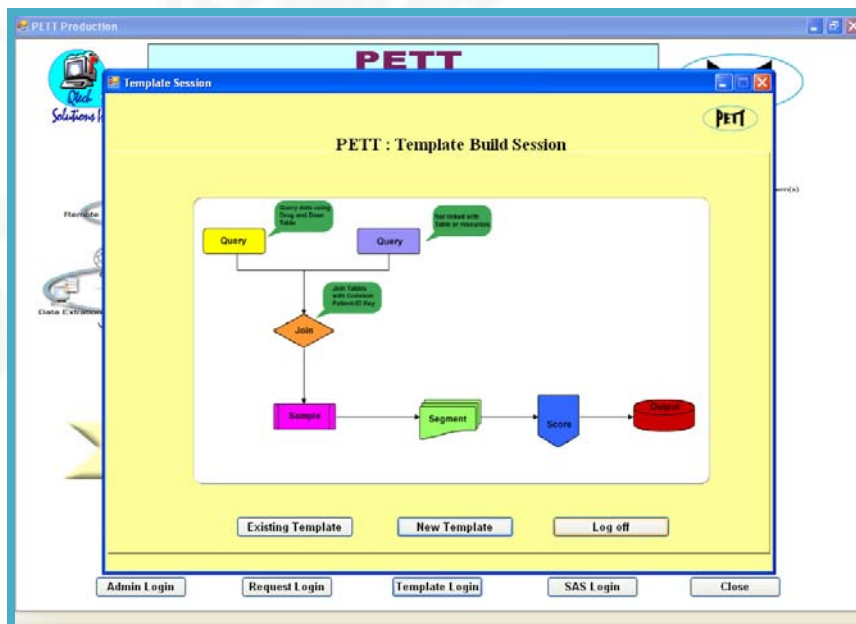
- iii. **Linux Login:** Using **Template Login** button, PETT user can connect and access Linux Server



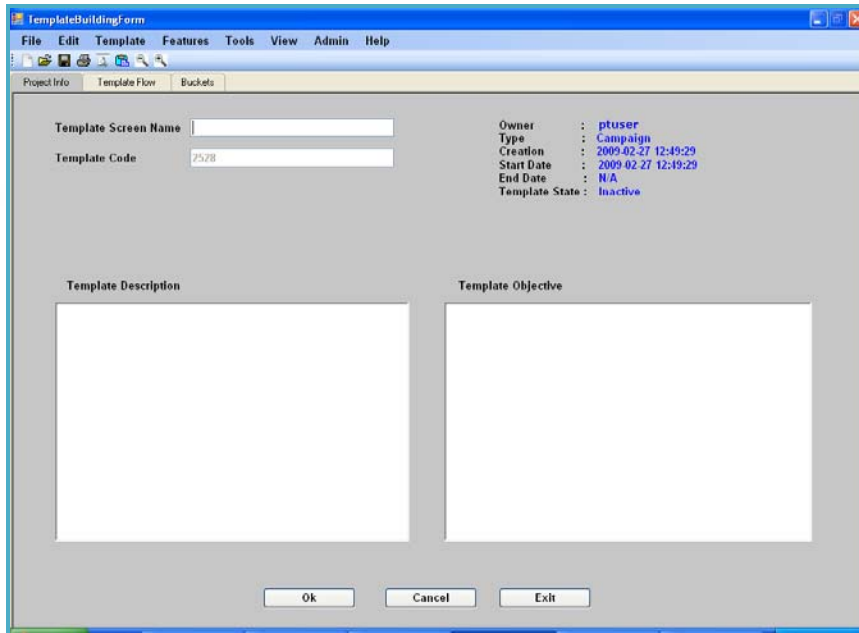
- iv. **SAS Login:** This facility is under process.

3. Template Building Process:

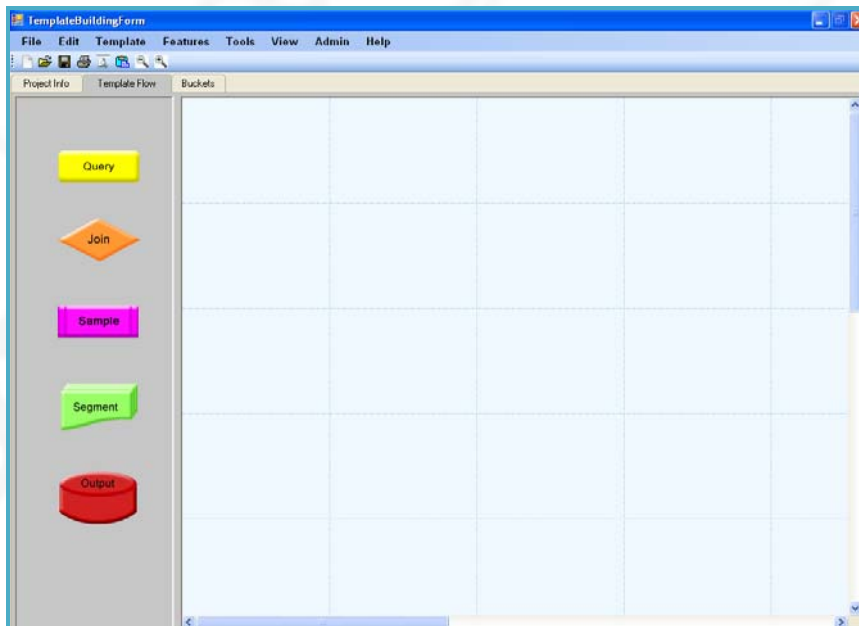
- i. When user will logged in using **Template Login** (i.e., for Linux) button, the following screen will be displayed. User can build new template by clicking on **New Template** Button.



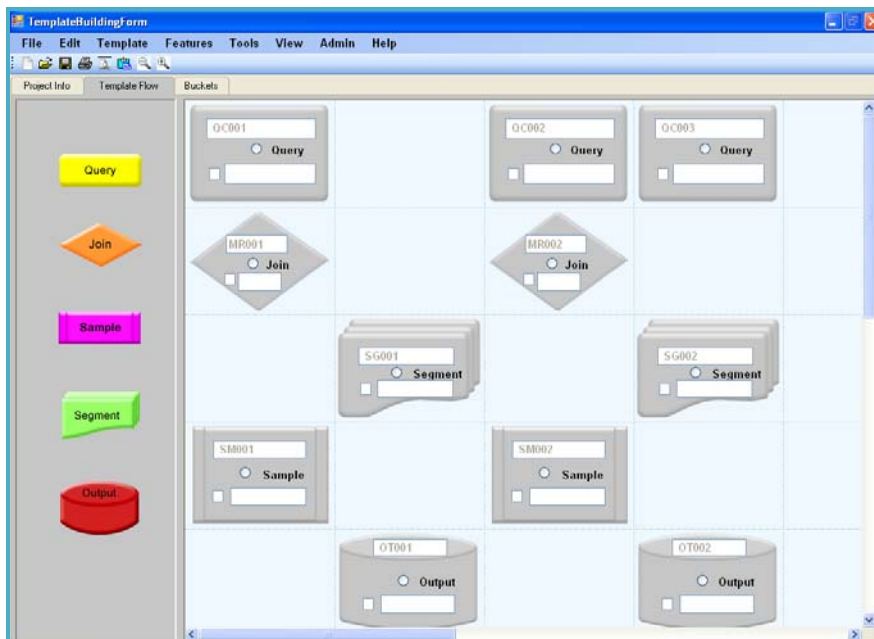
- ii. When user will click on **New Template** button, the following screen will be displayed by default. User can write template name, description and objective into specified text box.



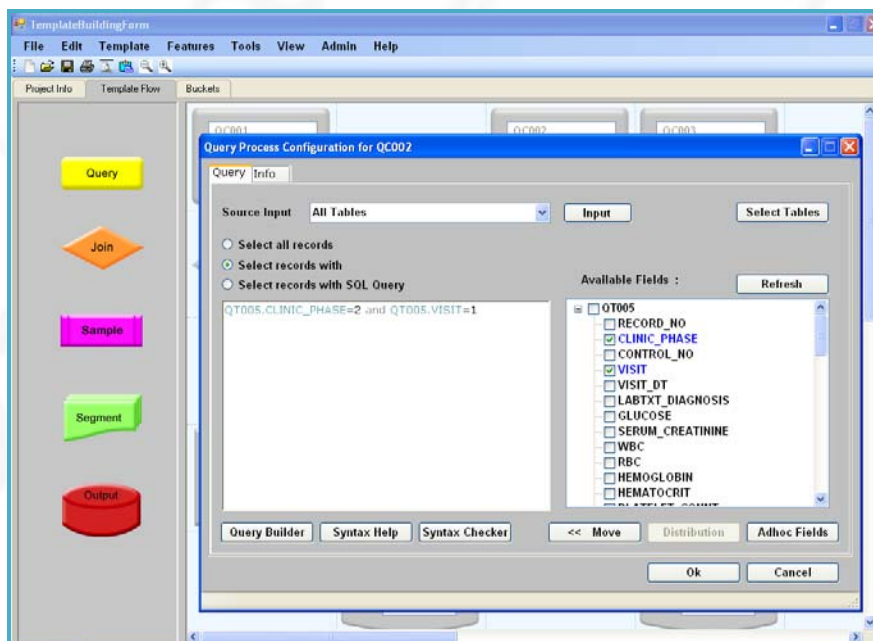
- iii. To build new template, user will have to click on **Template Flow** Tab, following screen will be displayed and user can select and drag process box(es) from Left site to Right side on panel as per requirements.



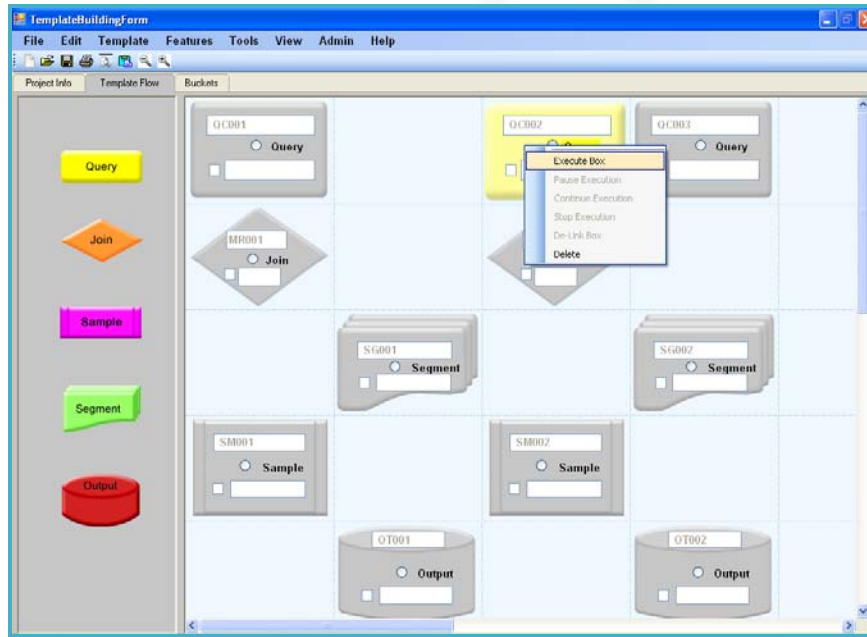
- iv. Below screen is showing process boxes which are dragged and dropped from Left side to Right side panel for configuration.



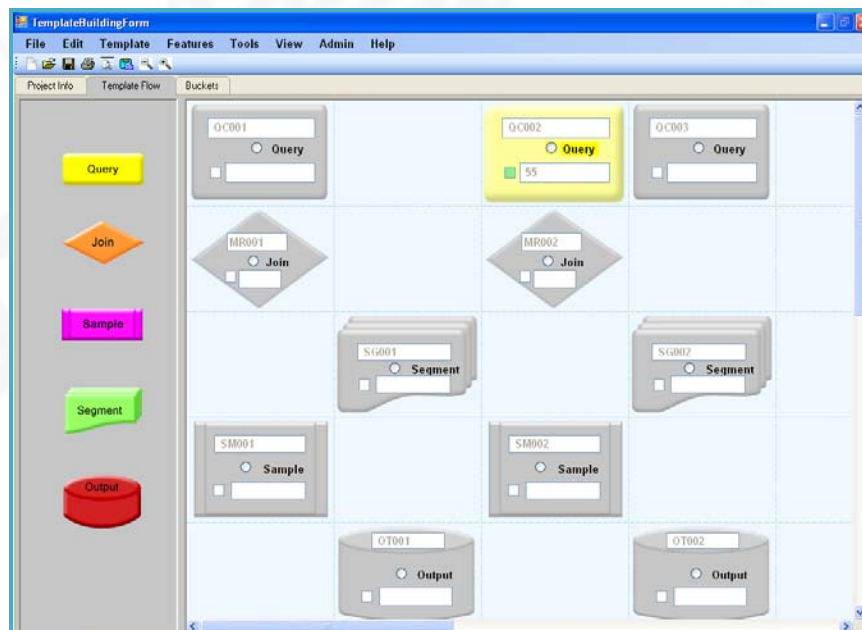
- v. To configure process box, user will have to double click on desired process box. Below is the 2nd Query Process Configuration Box. User can select or write required criteria/logic to get its result count. After configuration of process box, user should click on OK button.



- vi. When process box will be configured successfully, the color of that process box would be changed from Gray to its corresponding color. To execute configured process box, user will have to Right click on box and click on **Execute box** menu option at **pop-up** menu then only process box execution process will start from server.

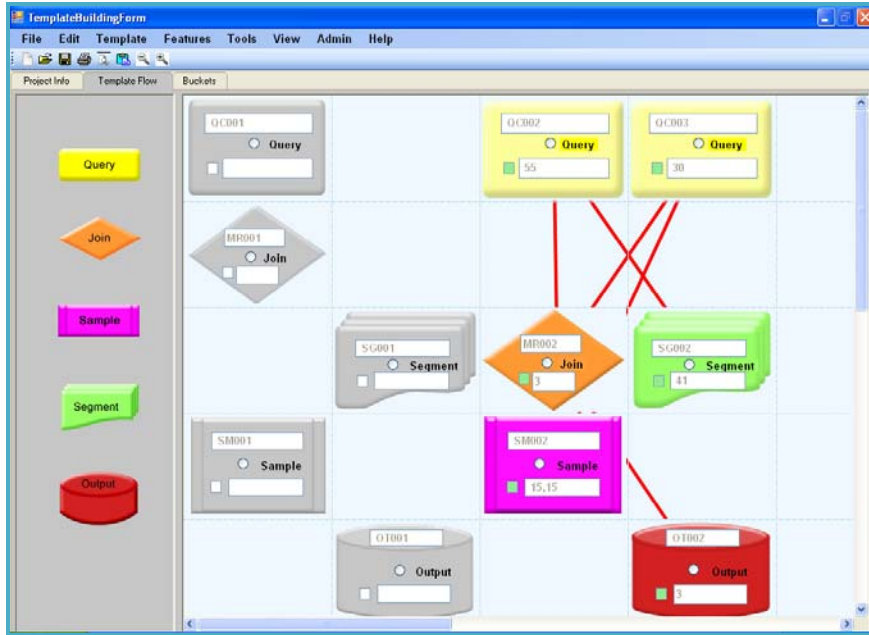


- vii. When execution process will complete successfully, the result count will be displayed in text box and small square box will be become in green color as shown below.





viii. Below screen is showing non-configure process boxes (in Gray color), configured and executed process boxes (in different color). Established link between boxes will be indicated through red line.



ix. When user will click on **Buckets** Tab, the brief information about dropped process box (es) on panel will be displayed as shown below.

The screenshot shows the Buckets tab in the TemplateBuildingForm application. The table displays the following data:

Bucket Name	Bucket ID	Level	Status	Count
QC001	QC001.0	Level-1	Not Executed	
QC002	QC002.0	Level-1	Executed	35
QC003	QC003.0	Level-1	Executed	30
MR001	MR001.0	Level-1	Not Executed	
MR002	MR002.0	Level-1	Executed	3
SG001	SG001.0	Level-1	Not Executed	
SG002	SG002.0	Level-1	Executed	41
SM001	SM001.0	Level-1	Not Executed	
SM002	SM002.0	Level-1	Executed	15
SM002	SM002.1	Level-2	Executed	15
O1001	O1001.0	Level-1	Not Executed	
O1002	O1002.0	Level-1	Executed	3

NOTE: Logic/criteria will be explained in details by PETT concerned executive.

Protocol Execution and Transformation Tool



Doctors

Researchers

Analysts

Location Address

New Jersey, USA

Qtech Solutions Inc.
200 Centennial Avenue,
Suite # 200 , Piscataway
New Jersey 08854, USA.
Phone : 732-377-2092, 732-207-4564
Fax : 732-377-2093
email : training@qtech-solutions.com

Hyderabad,INDIA

UBN Qtech Solutions(India) Pvt.Ltd
#408, 5th Floor , Sai Pragathi Towers,
Himayath Nagar, Hyderabad
Andhra Pradesh - 500 029 , India
Phone : 01191-40-66256475 / 76
Fax : 01191-40-66255558

