



QTECH-SOL PROFESSIONAL DEVELOPMENT CENTER LLC

Somerset New Jersey USA
Private Vocational School



Our Mission

Our mission is to provide the best-in-class job oriented career development Elearning training courses and programs in clinical research, SAS data management and business analysis for students and professionals requiring a skills refresh – or the development of new skills and experience for job entry, advancement, and placement

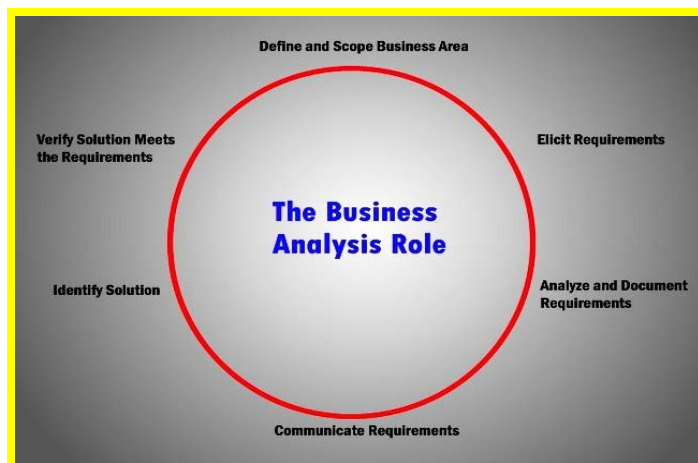
Healthcare Business Analysis

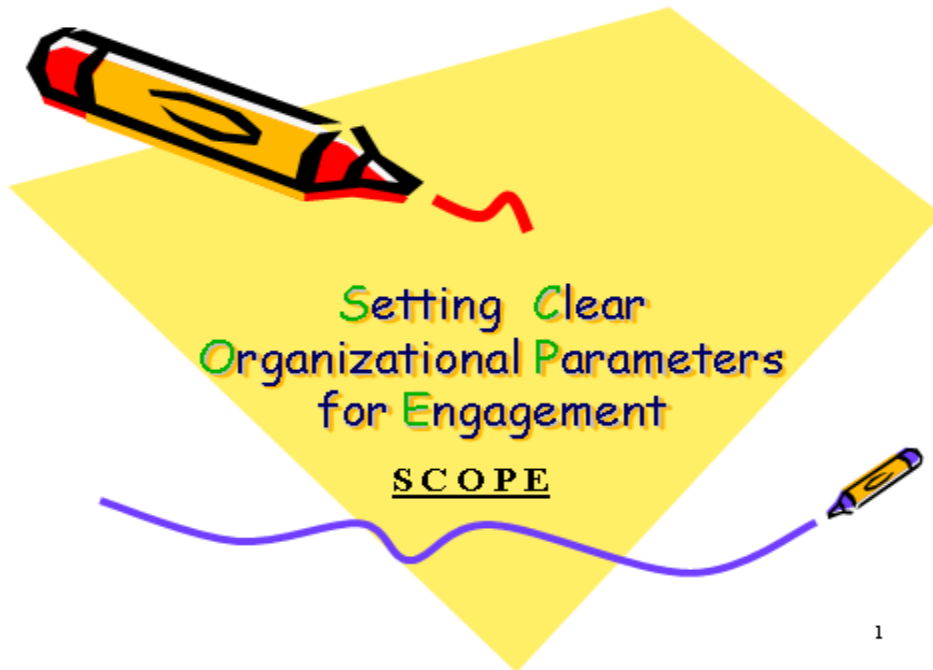


The following are the workshops offered at Qttech-Sol Professional Development Center. Each of the workshop provided is a 3 day program. Access to Online workshop material is provided to enrolled participant for workshop delivery. Enrolled Participants will attend WebEx Meeting to understand the workshop class and will submit their learning's as MCQ, Discussion Based Questions – DBQ and Exercises for delivery. The Exercises are evaluated for Feedbacks and Program Certification. The Program is designed by industry experts in domain, for students and young professionals. The training provides in-depth knowledge pertaining to the role and responsibilities performed by “**HealthCare Business Analyst**” with Healthcare Projects.

Lessons Offered

1. Introduction to Healthcare Business Analysis	7. NCPDP - Pharmacy Policies, Medical Policies
2. Requirement Elicitation and Analysis	8. Public Health Coverage
3. Overview of US Healthcare System	9. National Council for prescription Drug Product
4. International classification of Disease	10. Medicaid Management Information System
5. HIPAA	11. Data Warehouse Concept &Architecture
6. Healthcare claims processing	12. Glossary of Healthcare Terms





Do you want to know more? Connect with us!

Contact Information

Qtech-Sol Professional Development Center LLC



New Jersey USA

3 Executive Drive
Suite 320
Somerset, NJ 08873
Phone: (732) 770-4100
Fax: (888) 532-0210